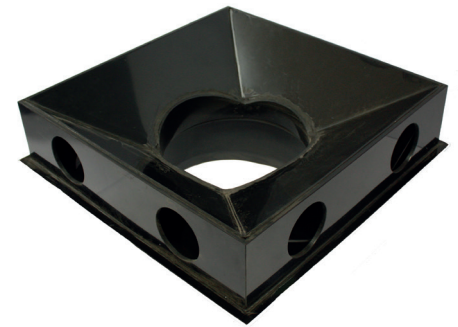


Ridgichute is a sumpless gully that has been designed for use on carriageways for the capture of surface water drainage from a larger catchment area than traditional gully pots. The main benefit of its sumpless design is to eliminate the need for maintenance and cleaning activities on high risk carriageways. This also removes the need for the carriageway to be closed, allowing traffic to be free flowing.

There are three sizes available which have been designed to sit beneath the most popular gully gratings. Available sizes are: 600 x 600mm, 900 x 900mm and 1200 x 675mm, with the choice of either a 225mm or 300mm outlet.



Key benefits

- Reduces the risk of gully blockages due to silt accumulation
- Captures water from a larger carriageway surface area
- Reduces the need for workmen on the carriageway undertaking gully maintenance
- Reduces number of individual maintenance activities
- Fits under the most popularly used gratings
- Integrates with the Ridgidrain system
- Prevents contaminated silts and liquor accumulation
- Eliminates the foul flush of heavily polluted sump liquor

Applications

Ridgichute is to be used for carriageway applications to help capture surface water from a larger road area. They are to be used in conjunction with the Ridgidrain piping system and RIDGISTORM Separate Chambers. Captured surface water falls through the Ridgichute outlet directly into the Ridgidrain system. The pipework will then lead to a silt collection chamber where maintenance activities can take place away from the carriageway.

Performance

When surrounded by concrete the Ridgichute will have a life equivalent to that of the precast concrete and clay gullies. Ridgichute gullies are resistant to the most common chemicals and are suitable for surface water drainage applications.

PRODUCT CODE	SIZE (mm)	OUTLET (mm)	WEIGHT (kg)	MATERIAL
RGC600225	600 x 600	225	8	Polypropylene
RGC600300	600 x 600	300	8	Polypropylene
RGC900225	900 x 900	225	21	Polypropylene
RGC900300	900 x 900	300	21	Polypropylene
RGC1200225	1200 x 675	225	21	Polypropylene
RGC1200300	1200 x 675	300	21	Polypropylene

Technical Support

Detailed guidance and assistance is available.

For further information, please contact our Technical Team on **+44 (0)1509 615 100** or email: civils@polypipe.com or visit www.polypipe.com/civils-technical-hub

All descriptions and illustrations in this publication are intended for guidance only and shall not constitute a 'sale by description'. All dimensions and weights given are nominal and Polypipe may modify and change the information, products and specifications from time to time for a variety of reasons, without prior notice. The information in this publication is provided 'as is' on July 2018. Updates will not be issued automatically. This information is not intended to have any legal effect, whether by way of advice, representation or warranty (express or implied). We accept no liability whatsoever (to the extent permitted by law) if you place any reliance on this publication you must do so at your own risk. All rights reserved. Copyright in this publication belongs to Polypipe and all such copyright may not be used, sold, copied or reproduced in whole or part in any manner in any media without prior consent. © Polypipe is a registered trademark of Polypipe. All Polypipe products are protected by Design Right under CDPA 1988. Copyright © 2018 Polypipe. All rights reserved.