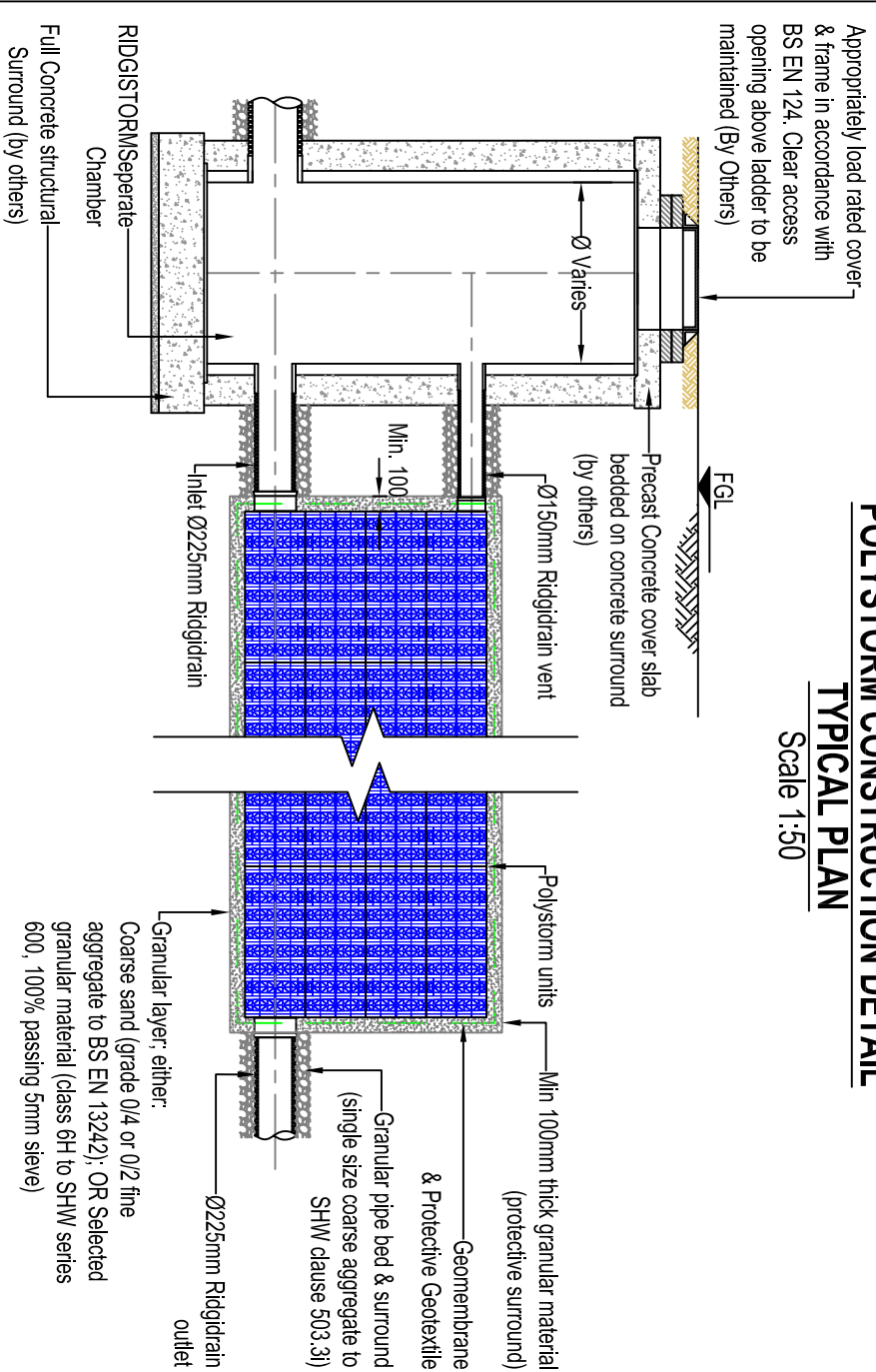
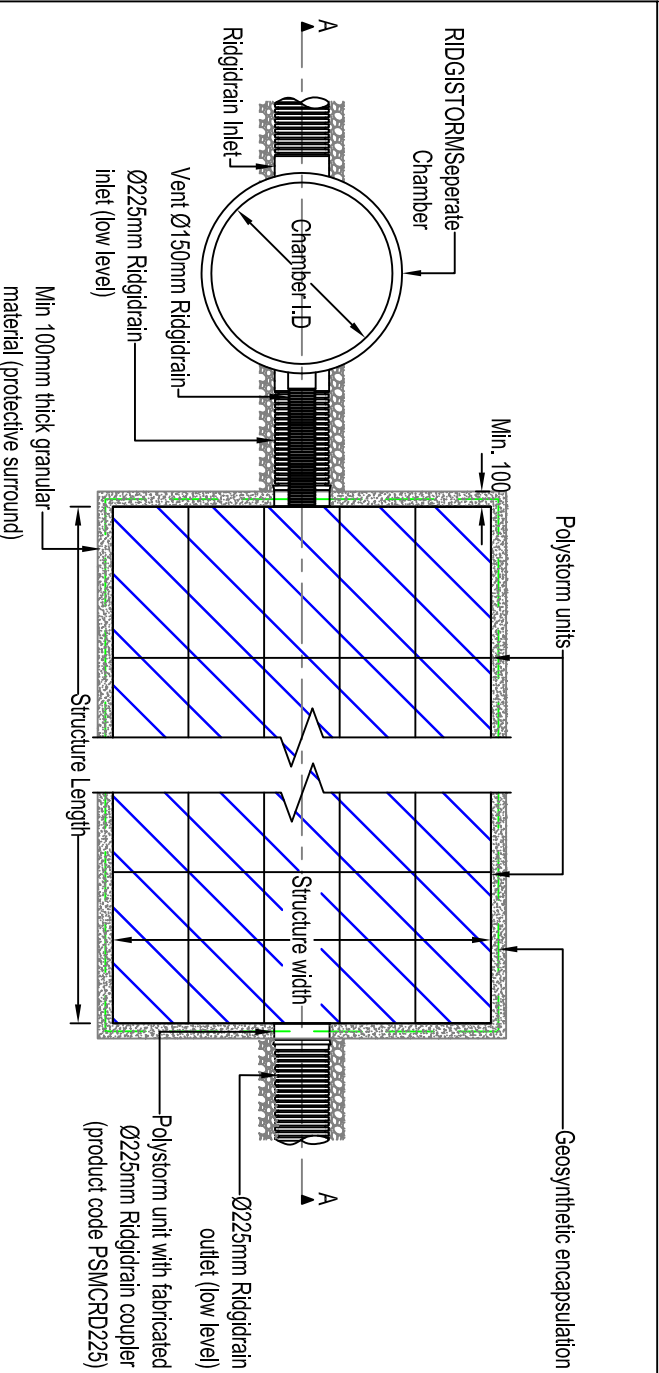


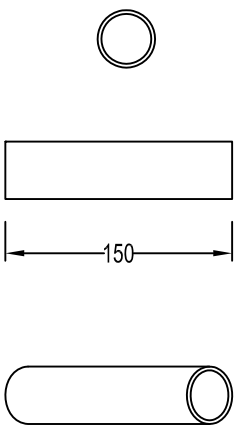
POLYSTORM SHEAR CONNECTIONS ELEVATION
Scale 1:20



POLYSTORM CONSTRUCTION DETAIL
TYPICAL SECTION
Scale 1:50



POLYSTORM SHEAR CONNECTOR
Scale 1:5



POLYSTORM SYSTEM NOTES

1. Standard Polystorm units have a Ø160mm BS EN 1407-1 connection. Polystorm units can be fabricated with either a Ø225mm or Ø300mm Ridgidrain connection please refer to relevant details.

NOTES

1. All dimensions in millimetres, unless otherwise stated.
2. All dimensions are nominal and may vary within manufacturing or construction tolerances.
3. All site temporary and enabling works by others.
4. Polypipe products to be installed in accordance with Polypipe civils recommendations (refer to Polypipe technical guidance for further information), giving due consideration to the requirements of the organisation who will be taking ultimate owner ship of the installation.
5. This drawing is intended for guidance only. Confirmation of the information contained within this document should be sought from the consulting engineers before final design or construction activities commence.



Polypipe Civils
Charmwood Business Park,
North Road, Loughborough,
Leicestershire, LE11 1LE
Tel: 01509 615100
Fax: 01509 615215
www.polypipe.com/civils
www.polypipe.com/wms

POLYSTORM STANDARD DETAILS

PROJECT	POLYSTORM STANDARD DETAILS	
TITLE	POLYSTORM TANK ASSEMBLY DETAIL	
DATE	17/03/16	DRAWN BY JL
ORIGINAL SIZE	A3	SCALE AS SHOWN
DRAWING NO.	PSM_SD_009	REV:

The information in this document is of an illustrative nature and is supplied by Polypipe Civils without charge. This document does not form the whole or any part of a contract or intended contract with the user. The information within this document should not be solely relied upon to determine the suitability or installation requirements of our products for a proposed application and expected site conditions; expert advice should be sought in this respect. Final determination of the suitability of any information or material for the use contemplated and the manner of use is the sole responsibility of the user and the user must assume all risk and liability in connection therewith. Further information with regard to liabilities may be found at www.polypipe.com/disclaimer.