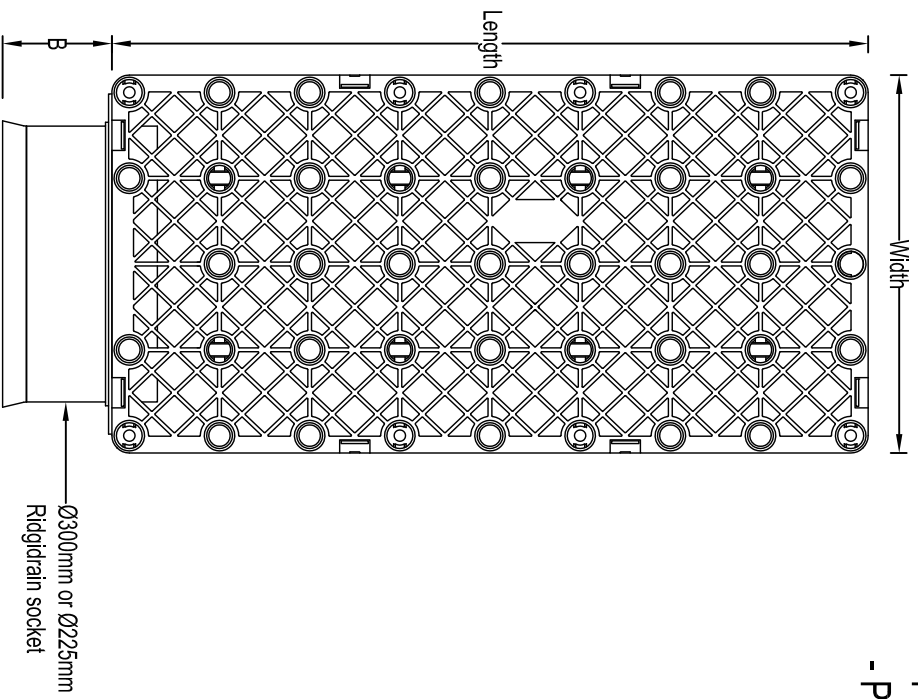
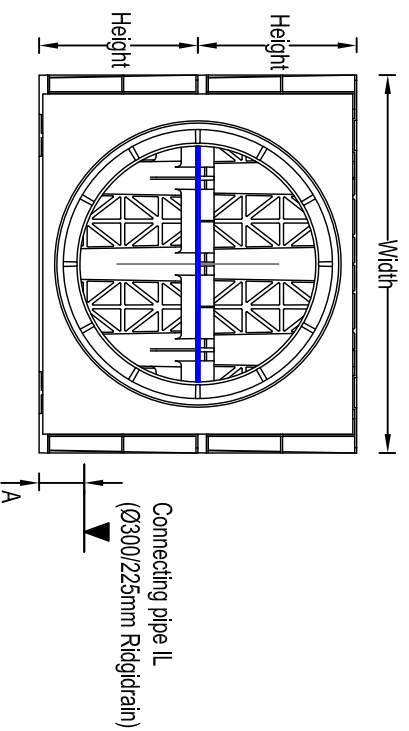


POLYSTORM XTRA CELLS COMPLETE WITH COUPLER

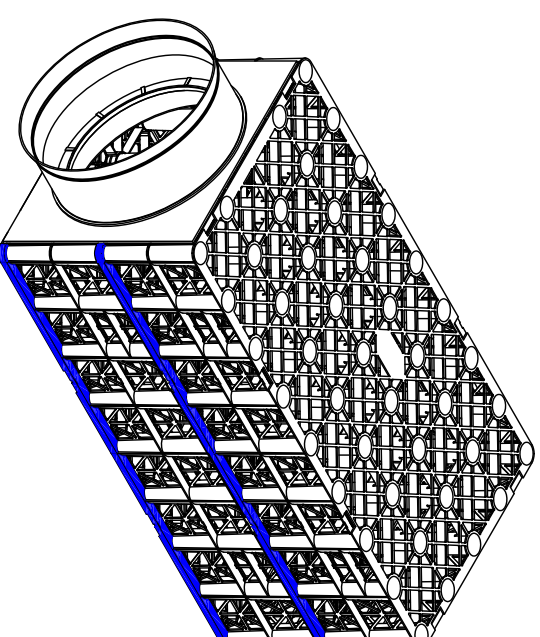
- PSM3CRD225
- PSM3CRD300



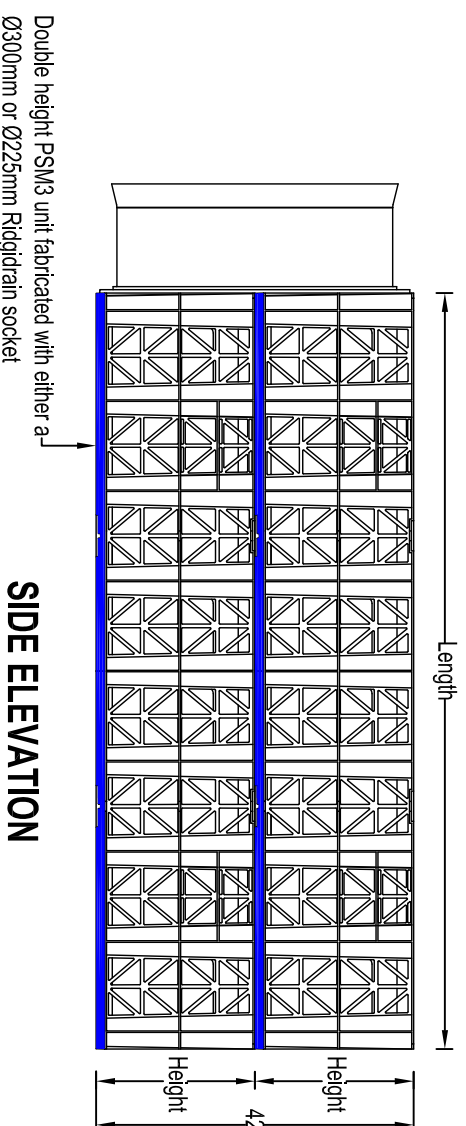
PLAN VIEW
Scale 1:10



END ELEVATION
Scale 1:10

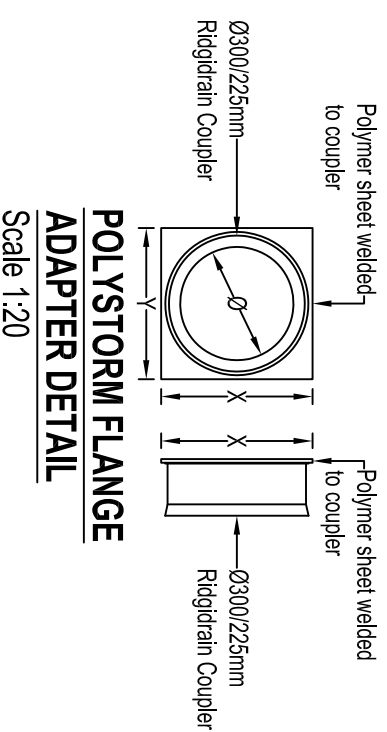


ISOMETRIC VIEW
Scale 1:10



SIDE ELEVATION
Scale 1:10

POLYSTORM TABLE - CELL COMPLETE WITH COUPLER										
NAME	CODE	LENGTH (mm)	WIDTH (mm)	HEIGHT (mm)	A (mm)	B (mm)	VERTICAL STRENGTH (kN/m ²)	LATERAL STRENGTH (kN/m ²)	COLOUR	MATERIAL
Polystorm Xtra	PSM3CRD225	1000	500	420	60	136	834	93	Grey	Prime Polypropylene
Polystorm Xtra	PSM3CRD300	1000	500	420	60	145	834	93	Grey	Prime Polypropylene



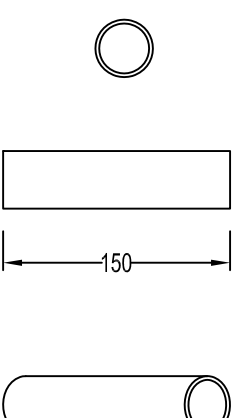
POLYSTORM FLANGE ADAPTER DETAIL
Scale 1:20

POLYSTORM FLANGE ADAPTER TABLE			
FLANGE CODE	Ø (mm)	X (mm)	Y (mm)
PSMFA225	225	385	450
PSMFA300	300	385	450

* Flange adapters are compatible with the PSM1, PSM1A & PSM2 cells.
* Consideration to hydraulic performance should be taken when using a flange adapter



POLYSTORM CLIP
Scale 1:5



POLYSTORM SHEAR CONNECTOR
Scale 1:5

POLYSTORM SYSTEM NOTES

1. PSMCRD units may be used in place of Polystorm Xtra units where a larger connection is required compared to the standard unit.

NOTES

1. All dimensions in millimetres, unless otherwise stated.
2. All dimensions are nominal and may vary within manufacturing or construction tolerances.
3. All site temporary and enabling works by others.
4. Polypipe products to be installed in accordance with Polypipe civils recommendations (refer to Polypipe technical guidance for further information), giving due consideration to the requirements of the organisation who will be taking ultimate ownership of the installation.
5. This drawing is intended for guidance only. Confirmation of the information contained within this document should be sought from the consulting engineers before final design or construction activities commence.

The information in this document is of an illustrative nature and is supplied by Polypipe Civils without charge. This document does not form the whole or any part of a contract or intended contract with the user. The information within this document should not be solely relied upon to determine the suitability or installation requirements of our products for a proposed application and expected site conditions; expert advice should be sought in this respect. Final determination of the suitability of any information or material for the use contemplated and the manner of use is the sole responsibility of the user and the user must assume all risk and liability in connection therewith. Further information with regard to liabilities may be found at www.polypipe.com/disclaimer.



Polypipe Civils

Charnwood Business Park,
North Road, Loughborough,
Leicestershire, LE11 1LE

Tel: 01509 615100
Fax: 01509 615215
www.polypipe.com/civils
www.polypipe.com/wms

PROJECT

POLYSTORM STANDARD DETAILS

STATUS
FOR INFORMATION

TITLE

POLYSTORM XTRA CONNECTION DETAIL

DATE	DRAWN BY	ORIGINAL SIZE	SCALE	AS SHOWN
17/03/16	JL	A3	AS SHOWN	
DRAWING NO.	PSM_SD_005	REV.		