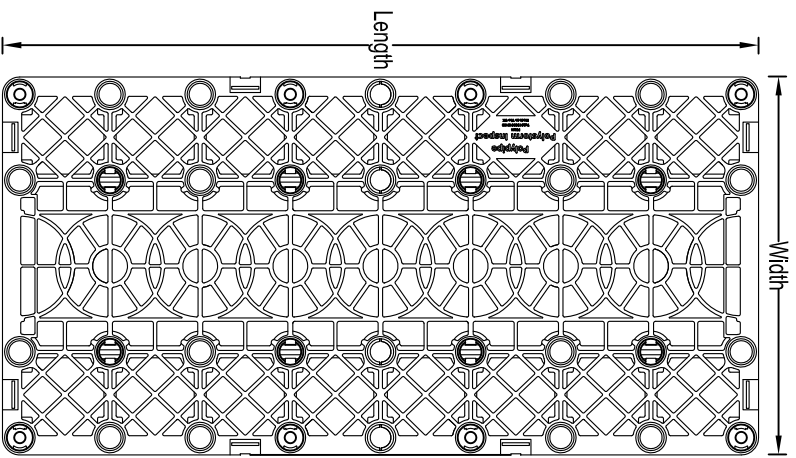
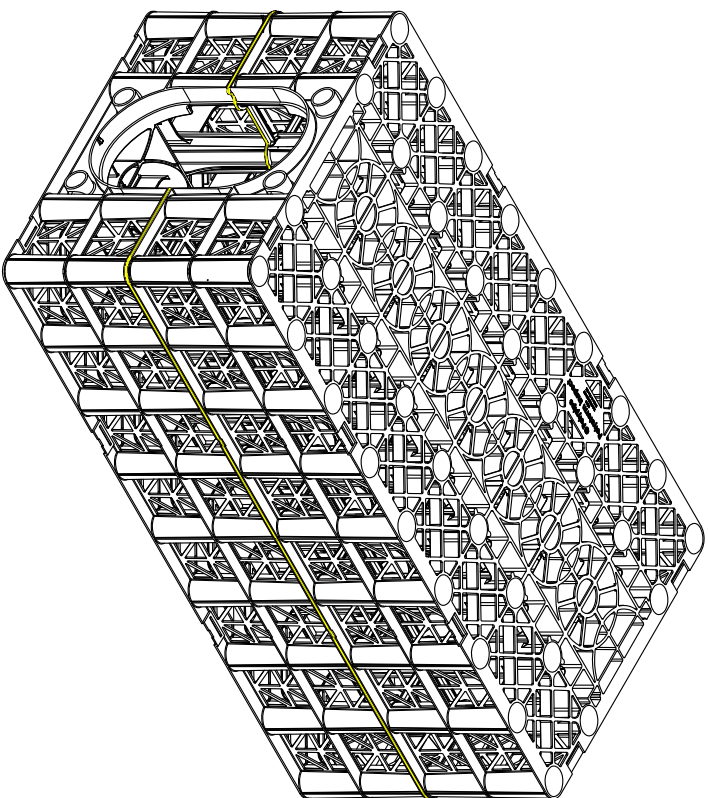


POLYSTORM CELL
Product Code: PSM4



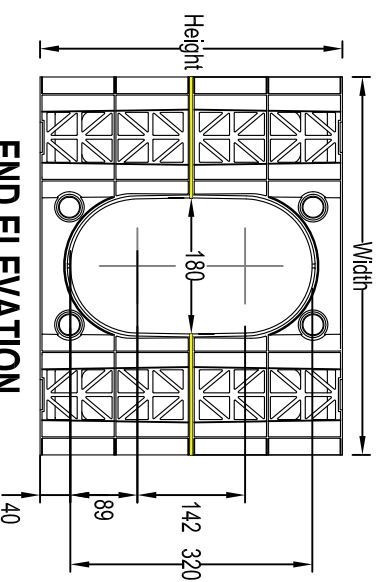
PLAN VIEW

Scale 1:10



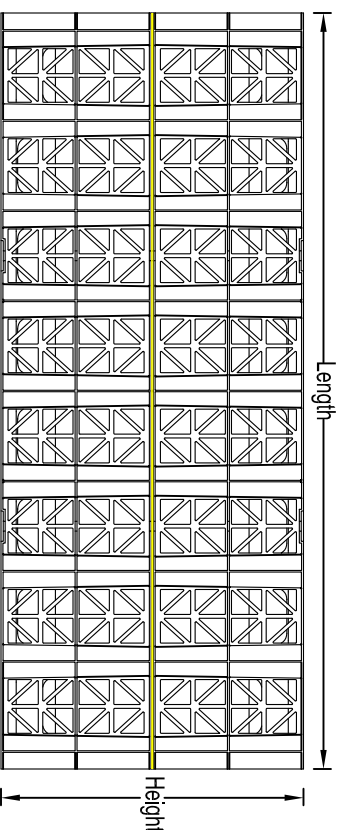
ISOMETRIC VIEW

Scale 1:10



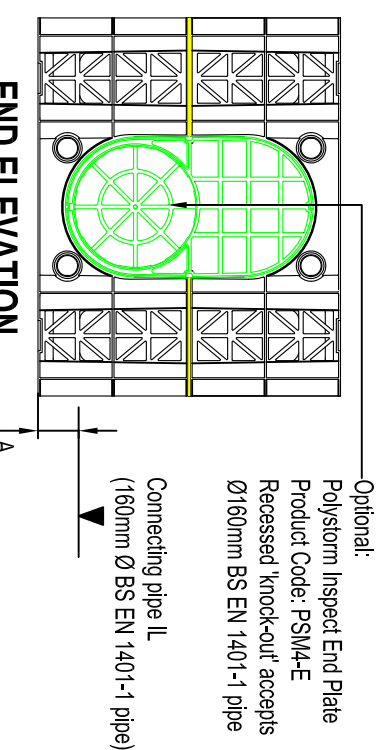
END ELEVATION

Scale 1:10



SIDE ELEVATION

Scale 1:10



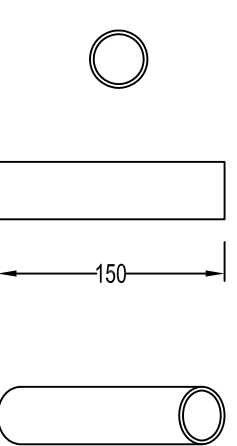
**END ELEVATION
(Including Insert)**

Scale 1:10



POLYSTORM CLIP

Scale 1:5



**POLYSTORM
SHEAR CONNECTOR**

Scale 1:5

POLYSTORM TABLE									
NAME	CODE	LENGTH (mm)	WIDTH (mm)	HEIGHT (mm)	A (mm)	VERTICAL STRENGTH (kN/m ²)	LATERAL STRENGTH (kN/m ²)	COLOUR	MATERIAL
Polystorm Inspect	PSM4	1000	500	400	54	440	63	Grey	Prime Polypropylene

- POLYSTORM SYSTEM NOTES**
1. Polystorm units are available with either a Ø225mm or Ø300mm Rigid/drain socket upon request. Please refer to:- PSM_SD_006

- NOTES**
1. All dimensions in millimetres, unless otherwise stated.
 2. All dimensions are nominal and may vary within manufacturing or construction tolerances.
 3. All site temporary and enabling works by others.
 4. Polystorm products to be installed in accordance with Polypipe civils recommendations (refer to Polypipe technical guidance for further information), giving due consideration to the requirements of the organisation who will be taking ultimate owner ship of the installation.
 5. This drawing is intended for guidance only. Confirmation of the information contained within this document should be sought from the consulting engineers before final design or construction activities commence.

Optional:
Polystorm Inspect End Plate
Product Code: PSM4-E
Recessed 'knock-out' accepts
Ø160mm BS EN 1401-1 pipe
Connecting pipe 1L
(160mm Ø BS EN 1401-1 pipe)

The information in this document is of an illustrative nature and is supplied by Polypipe Civils without charge. This document does not form the whole or any part of a contract or intended contract with the user. The information within this document should not be solely relied upon to determine the suitability or installation requirements of our products for a proposed application and expected site conditions; expert advice should be sought in this respect. Final determination of the suitability of any information or material for the use contemplated and the manner of use is the sole responsibility of the user and the user must assume all risk and liability in connection therewith. Further information with regard to liabilities may be found at www.polypipe.com/disclaimer.



Polypipe Civils

Charmwood Business Park,
North Road, Loughborough,
Leicestershire, LE11 1LE

Tel: 01509 615100
Fax: 01509 615215
www.polypipe.com/civils
www.polypipe.com/wms

POLYSTORM STANDARD DETAILS

PROJECT	STATUS	FOR INFORMATION
TITLE	DATE	DRAWN BY
POLYSTORM INSPECT GEOCELLULAR COMPONENT	17/03/16	JL
ORIGINAL SIZE	SCALE	AS SHOWN
A3	AS SHOWN	
DRAWING No.	REV.	
PSM_SD_003		